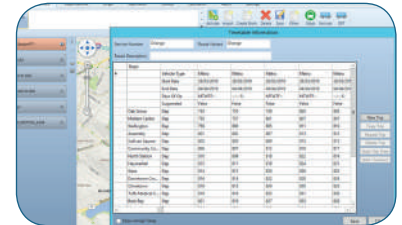


TRACC

Accurate, multi-modal travel time analysis

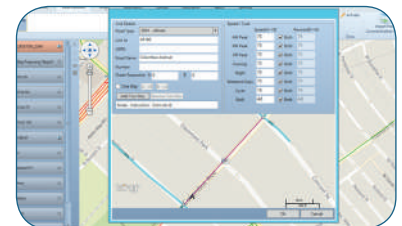
Easy loading of project data

- Public transport data (GTFS / TransXChange / ATCO Cif)
- Digitised road data layers
- Origins
- Destinations
- Demographic (census) data



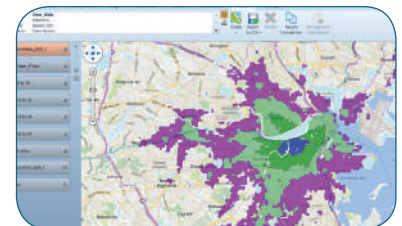
Quick editing of public transport and road data

- Add new PT services and create timetable
- Edit existing PT service timetable and routes
- Suspend services from calculations
- Add new road links



Easy production of result data

- Fully multi modal – results for car, cycle, walking or public transport
- Travel time/distance origin to destination matrices
- Travel time isochrones / point maps
- Destination catchment maps
- Demographic data reports e.g. total number of people within X minutes of destination(s)
- Stop frequency maps
- Local accessibility maps (based upon a minimum service frequency and maximum walking time)



Other features

- Standalone GIS. Does not require other GIS platforms to work but can import and export data to standard formats
- Accurate calculations utilising road networks not crow flies
- Can undertake calculations on large amounts of origins and destinations (many billions of O/D pairs can be generated)
- Check results with path reports showing all elements of a PT journey / path along roads

“TRACC has improved our internal process & accuracy of analysis”

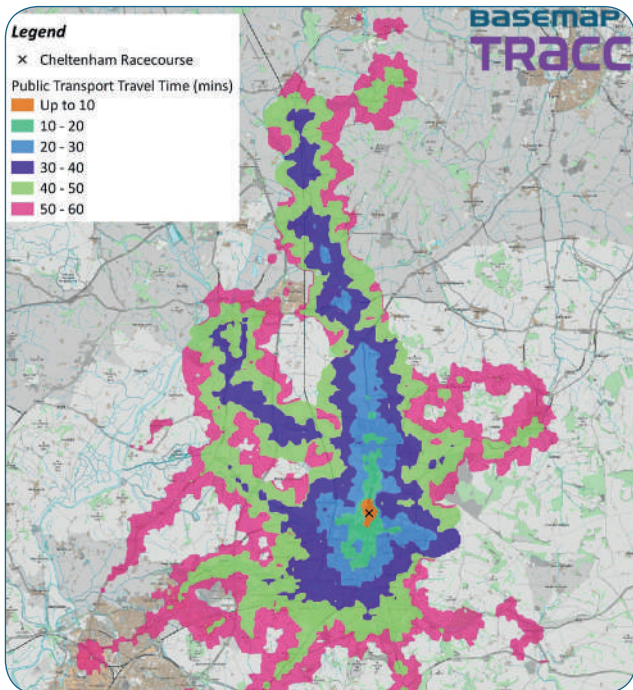
UK Department for Transport

Some common uses for transport planning consultancies include:

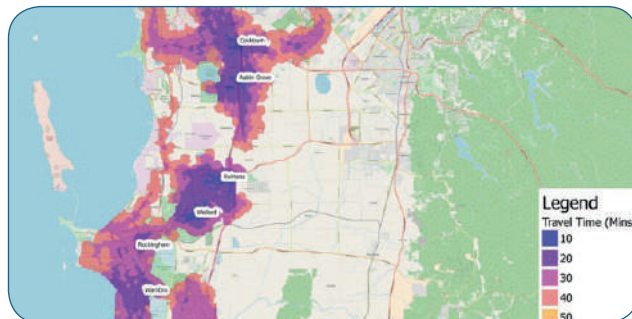
- Assessment of small scale to major transport infrastructure projects
- Advising on best new route for a new bus service
- Assessment of PT service rationalisation – which services to cut
- Existing PT access to development sites
- Office relocation analysis
- Provision of travel time maps / data to help when responding to project bids or applying for government grant money
- Car parking permit allocation – assessing individuals existing transport opportunities to work

TRACC

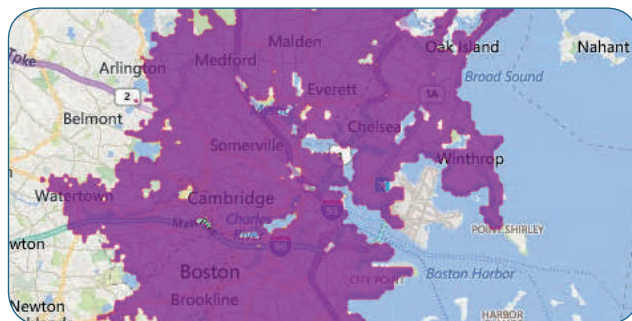
Accurate, multi-modal travel time analysis



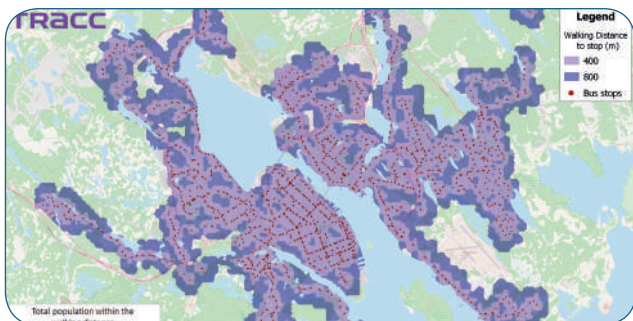
Public transport (all modes) travel time



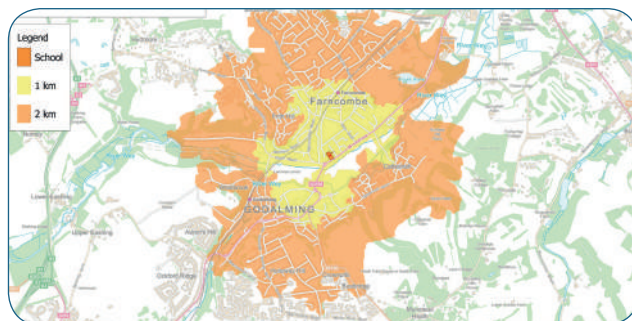
Bus access to rail stations



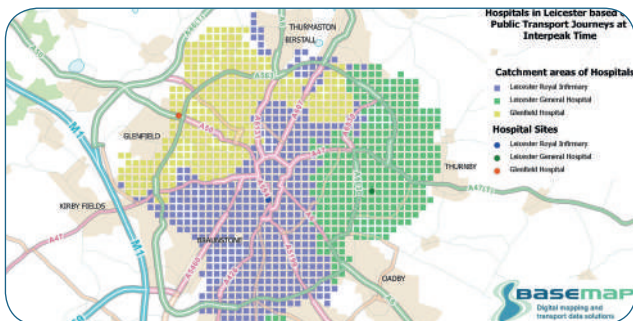
Car travel time



Local accessibility analysis



Walking or cycle time



Public transport travel time catchments

“offers more than just accessibility contours”

WSP

“determines the impact of transit network changes”

City of Ottawa

“a fantastic tool for evaluating accessibility”

Government of Sweden

